

1 Procedure for installation with Linux

Operation checking environments (as of January, 2007)

The following operating environments are being checked.

Operating systems	Red Hat Linux 9.0, SuSE Linux 8.2
CUPS Version	1.1.17 or more
Connecting the computer and printer	USB connection, Parallel connection, Network connection (AppSocket/HP JetDirect, IPP, LPD/LPR)
RAM	More than OS recommendation (128 MB or more is recommended)
Available hard disk space	256 MB or more



Detail

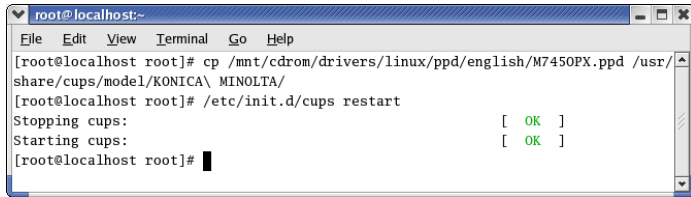
As an example, the descriptions of the operations for Red Hat 9.0 are provided in this chapter.

When using Linux, please note that its actual use should be made on the customer's own responsibility. We will not take any responsibility for damages that may be caused as a result of Linux being used by the customer.

To get the PPD file read into the CUPS

- ✓ Before proceeding with the installation, be sure to exit all running applications.
 - ✓ Root privileges are required in order to install ppd file.
- 1 Copy the ppd file (KO750UX.ppd) to the “/usr/share/cups/model/” on the computer.
 - For acquisition of the PPD driver for Linux, contact your service representative.
 - For details on the procedure for printing from OpenOffice, refer to “Example Using OpenOffice or using Star Suite” on page 4.
 - 2 From the Main Menu, select System Tools, then Terminal.
 - 3 Get the PPD file that has been copied read into the CUPS. And then restart the CUPS.
 - For example: Enter “/etc/init.d/cups restart”.

- The following command may be available depending on the method by which the installation is made.
- `/etc/re.d/init.d/cups restart`
- `/sbin/init.d/cups restart`
- “killall-HUP cupsd”



```

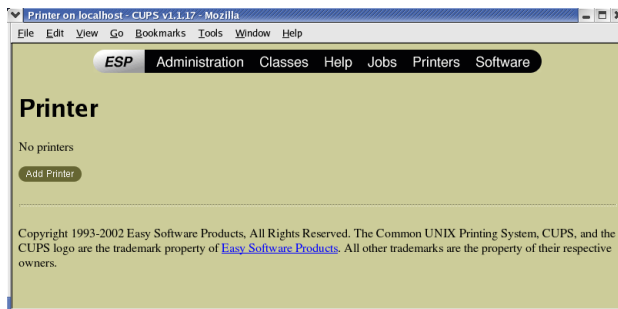
root@localhost:~
File Edit View Terminal Go Help
[root@localhost root]# cp /mnt/cdrom/drivers/linux/ppd/english/M7450PX.ppd /usr/
share/cups/model/KONICA\ MINOLTA/
[root@localhost root]# /etc/init.d/cups restart
Stopping cups:                                [ OK ]
Starting cups:                                [ OK ]
[root@localhost root]#

```

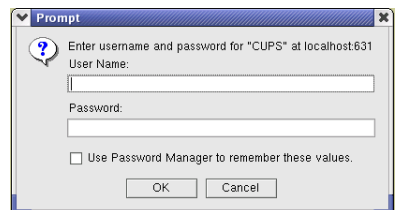
Adding the Printer

- ✓ After copying the PPD file, be sure to restart CUPS.

- 1 Start up the Web browser.
- 2 Enter the URL “`http://localhost:631`”, and then click [Manage Printers].
The CUPS Administration Web page appears.



- 3 Click [Add Printer].
A pop-up window appears.
- 4 Enter the user name and password for using root privileges, and then click [OK].
- 5 Enter the printer name, location, and description if necessary, and then click [Continue].
- 6 Select a Device Port from the Device list, then click [Continue].



- In case of IPP Printing
Select Internet Printing Protocol (ipp).
For the Device URI, enter “ipp://192.168.1.190/ipp”
- In case of LPD Printing
Select LPD/LPR Host or Printer.
For the Device URI, enter “lpd://192.168.1.190/lp”
Enter the device URI in the following form: socket://<Printer IP or Printer Hostname>[:port]
Example:
Using Printer IP - socket://192.168.1.190:9100
Using printer Hostname - socket://Hostname:9100
Hostname may be substituted by IP Address, and Port is optional.
- In case of USB Printing
Select USB Printer #1 (KONICA MINOLTA 750/600PS(P)).
If it is not displayed, restart the machine.
- In case of Parallel Printing
Select Parallel Port #1.

- 7 Click [Continue].
- 8 Select “KONICA MINOLTA”, click [Continue].
- 9 Select “KONICA MINOLTA 750/600PS(P)”, then click [Continue].

Specifying Printer Driver Settings

Displaying the Settings Page

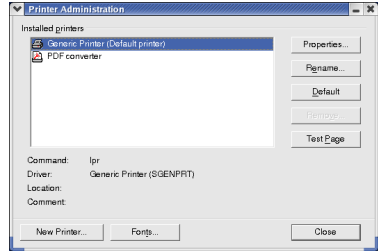
- 1 Start up the Web browser.
- 2 Enter the URL “http://localhost:631”, and then click [Manage Printers].
Printer on localhost.localdomain window appears.
- 3 Click [Configure Printer].
The printer driver settings page appears.

Example Using OpenOffice or using Star Suite

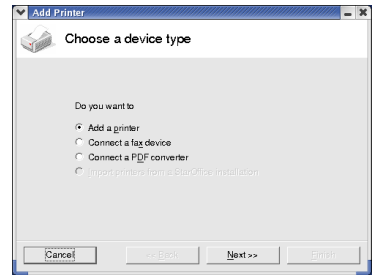
- ✓ Paper sizes supported by the bizhub 750/600 may not be displayed when the OpenOffice is being used. In such a case, follow the procedure given below. However, the procedure described here is applicable when the OpenOffice 1.0.2 is used on the RedHat9 and the procedure and operation given below may vary according to the version of an OS used.

- 1 From the main menu, select [Office], then [OpenOffice.org Printer Setup].

The printer Administration dialog box appears.

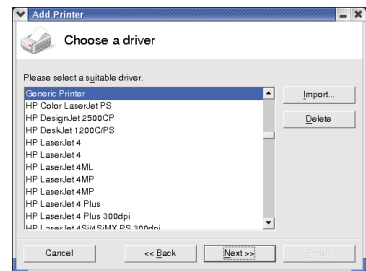


- 2 Click [New Printer].
The Add Printer dialog box appears.



- 3 Check that Add a printer is selected, and then click [Next].
 - Depending on the application that is used, the button may be displayed in gray-ing-out.

The printer selection list appears.



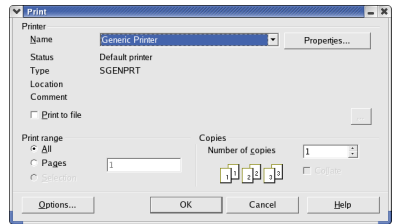
- 4 Click [Import].
Driver Installation dialog box appears.

- 5 Enter /usr/share/cups/model/ in the driver directory.

- 6 In the Selection of drivers list, select “KONICA MINOLTA 750/600 OpenOffice PPD”.

- 7 Click [OK].

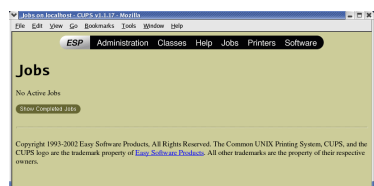
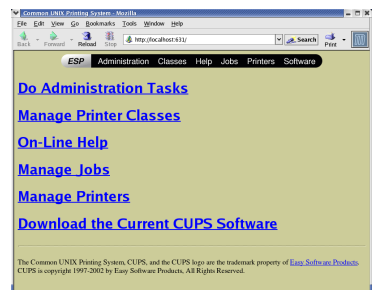
- 8 Select “KONICA MINOLTA 750/600 OpenOffice PPD” (KO750opn.ppd), and then click [Next].
- 9 In the command line, enter “lpr -P” followed by the name of the printer added first, then click Next.
- 10 Change the printer name.
- 11 Click [Finish]. The Printer Administration dialog box appears again.
- 12 Click [Close].
- 13 From the main menu, select [Office], then [OpenOffice.org Writer].
- 14 Click [Print] in the File menu.
The Print dialog box appears.
- 15 Select the name of the printer specified in the OpenOffice printer settings.
- 16 Click [OK].



Checking Print Jobs

You can check the status of print jobs from a Web browser.

- 1 Start up the Web browser.
- 2 Enter the URL “http://localhost:631”.
The CUPS Administration Web page appears.
- 3 Click [Manage Jobs].
A list of the currently active print jobs appear.





Detail

To check the status of completed print jobs, click [Show Complete Jobs].